

Labor Market Trends

June 27, 2018

Agenda Review



12:30

Networking

1:00

Introductions

1:10

Workforce Trends Presentation

1:30

Group Discussion

2:20

Next Steps

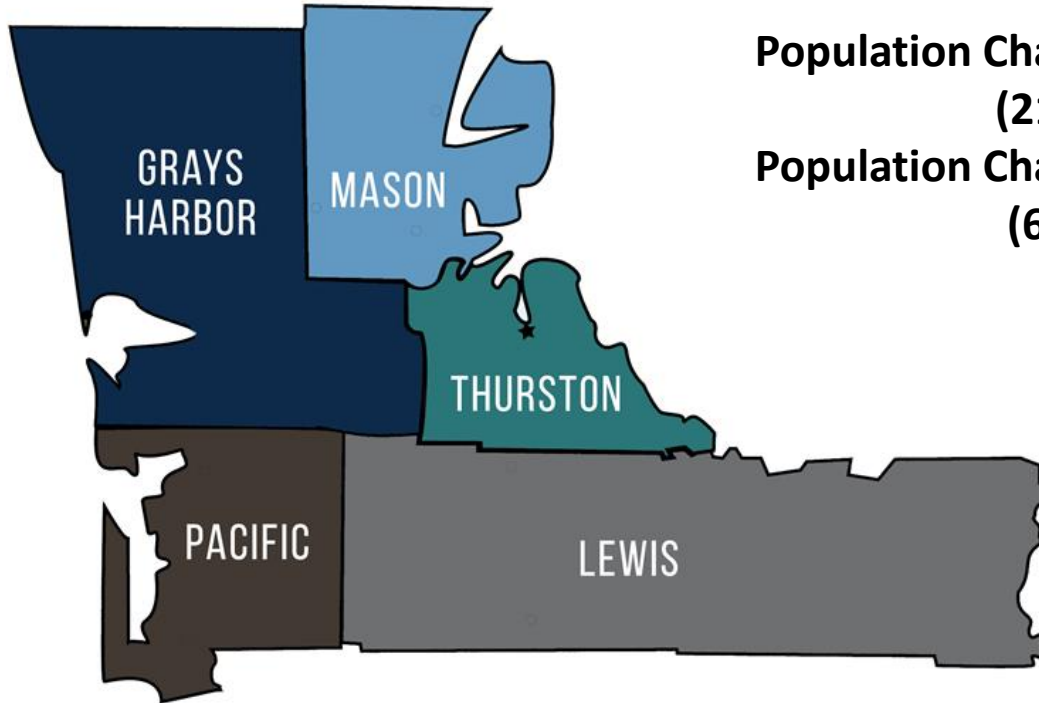
Workforce Trends

PacMtn & Beyond...



PacMtn Region

Over **7000** sq. miles
Total Population (2017) **511,750**



Population Change 2002-2017
(21%)

Population Change 2010-2017
(6%)

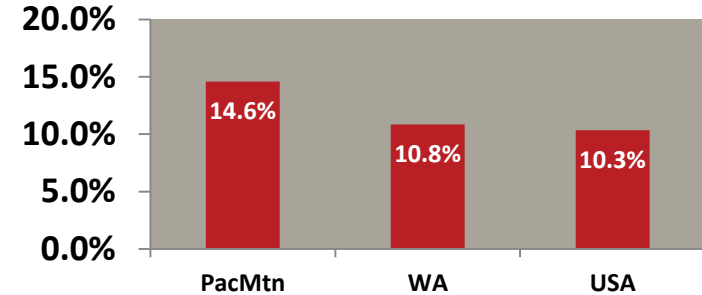
7 yr. County Change	
Grays Harbor	.2%
Lewis	3%
Mason	4%
Pacific	2%
Thurston	10%

Demographics

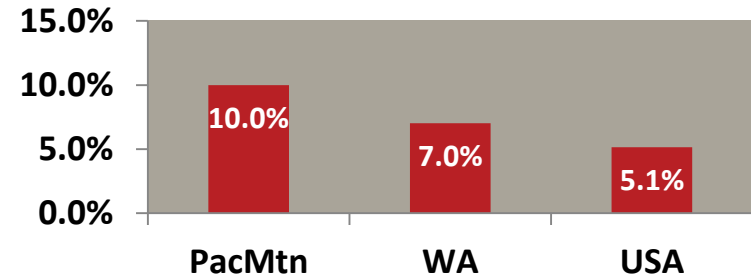


	PacMtn	WA	USA
White	85%	77%	73%
African-American	2%	4%	13%
Native-American	2%	1%	1%
Asian/PI	4%	8%	5%
Multiracial	5%	5%	3%
Other	1%	4%	5%

Persons with a disability 18-64



Veterans

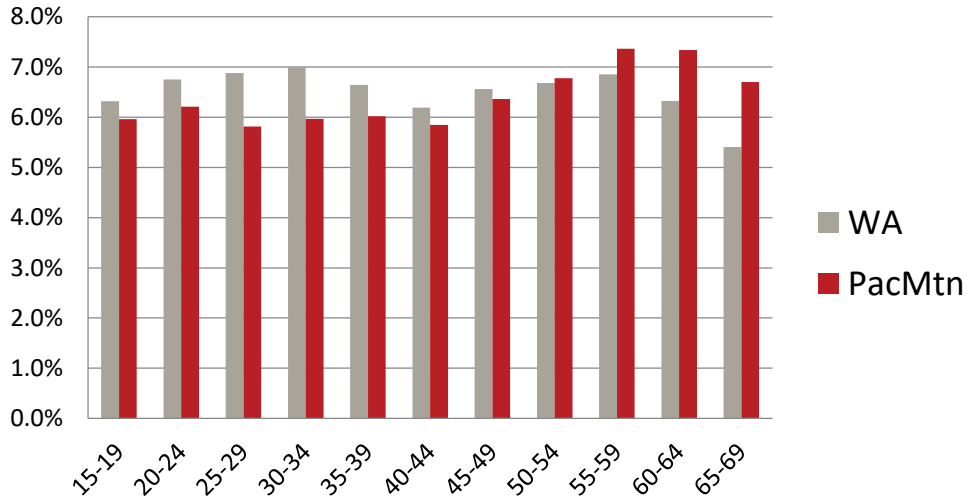


All charts on this slide derived from 2012-2016 five-year American Community Survey, US Census Bureau except total population which is from OFM April 1 estimates

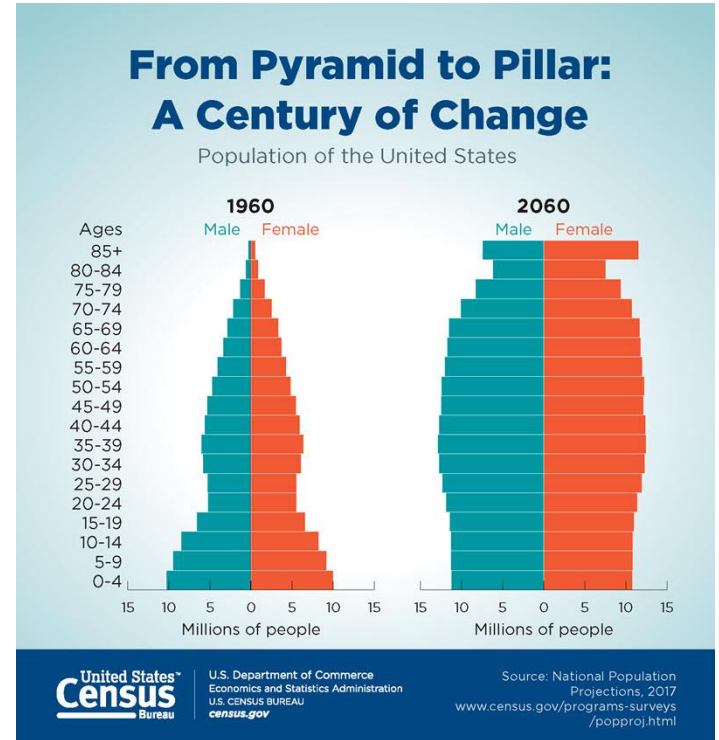
Working Age Distribution



PacMtn Region vs. Washington state

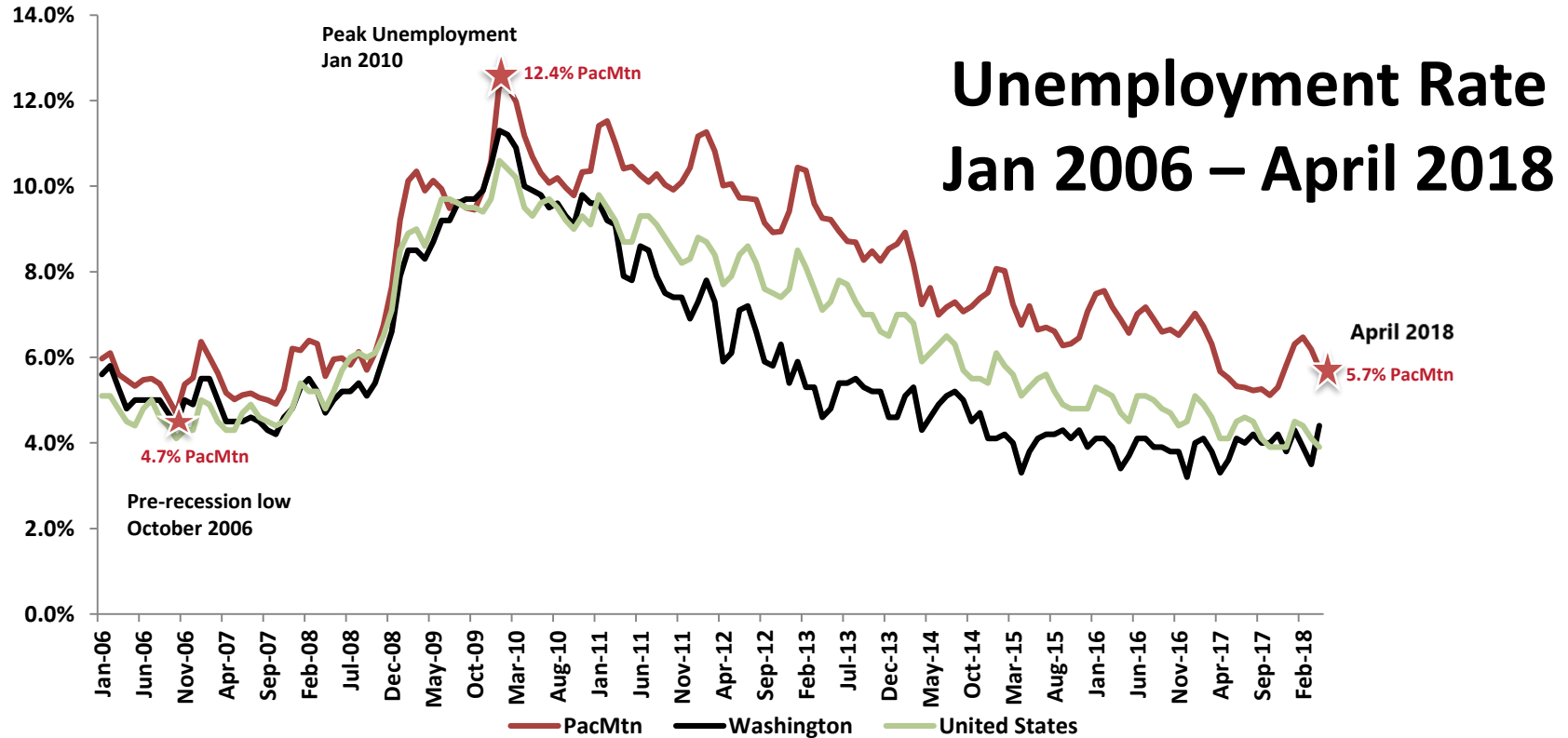


Washington Office of Financial Management, April 1, 2017 population estimates



PacMtn Employment

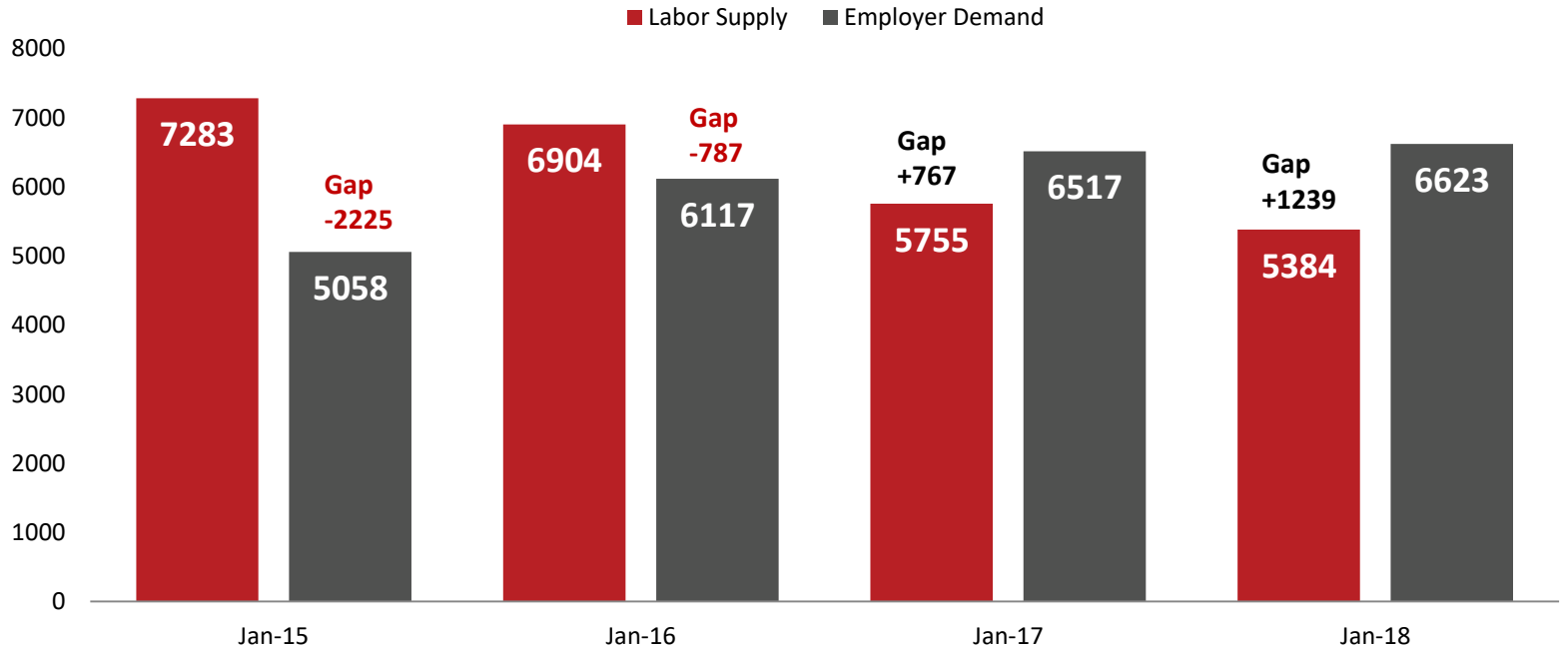
Unemployment: Before & After





Labor Market: Supply-Demand

PacMtn WDA 2015-2018



Source: Conference Board HelpWantedOnline and Employment Security Dept. data

Looking for Work?



Unemployment*	U-3	U-6**
US	3.9%	7.6%
Washington	4.8%	9%
PacMtn	5.4%	
Grays Harbor	6.3%	
Lewis	6.2%	
Mason	6.4%	
Pacific	6.8%	
Thurston	4.7%	

Based on the state U-6 percentage, there are approximately **23,000** people available to work in the PacMtn Region.

U-6 describes the percentage of the labor force that is:

Not working but looking for work (same as U-3)

Plus...

Gave up looking for work, but wants to work

Plus...

Works part-time involuntarily

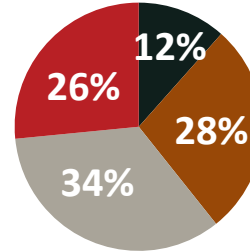
**Disclaimer: U-6 data below the state level is not available.

*Note: Not seasonally adjusted.



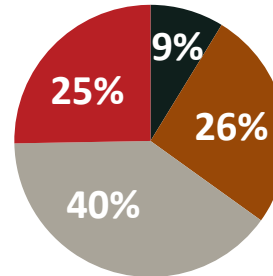
Local employers
prefer hiring
workers with at
least some
postsecondary
experience

Educational Attainment
Population aged 25-64
PacMtn WDA



- Less than high school
- High school or equivalent, no college
- Some college or Associate degree
- Bachelor's degree or advanced degree

Educational Attainment
Employed Workers aged 25-64
PacMtn WDA



- Less than high school
- High school or equivalent, no college
- Some college or Associate degree
- Bachelor's degree or advanced degree

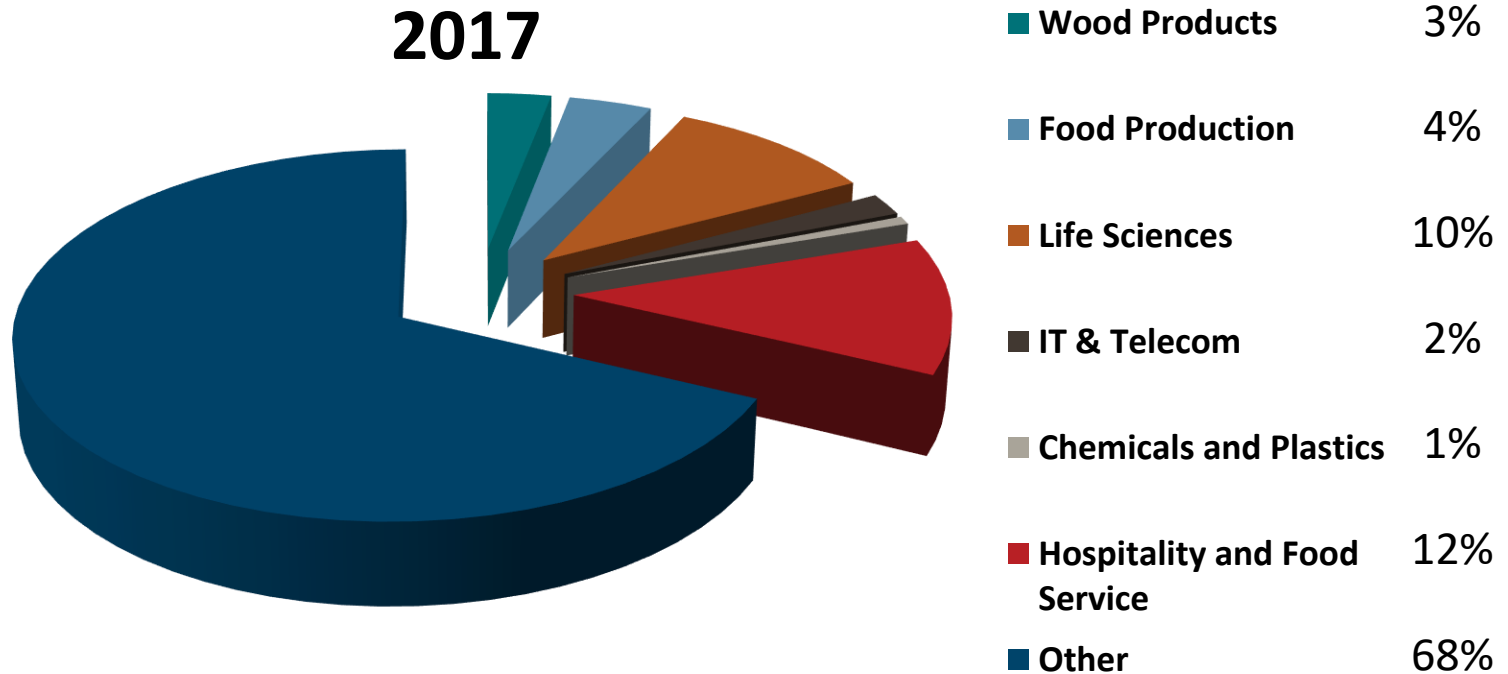
PacMtn Industry Sectors



15-year Employment Change by Sector

Industry % Total	Total - All Industries	Wood Products 3%	Food Production & Manufacturing 4%	Life Sciences 10%	IT & Telecom 2%	Chemicals & Plastics 1%	Hospitality Tourism 12%
2002	166,845	8,372	5,856	14,563	3,013	1,312	15,755
2017	194,424	5,446	7,259	19,357	3,997	1,380	22,146
Change	17%	-35%	24%	33%	33%	5%	41%

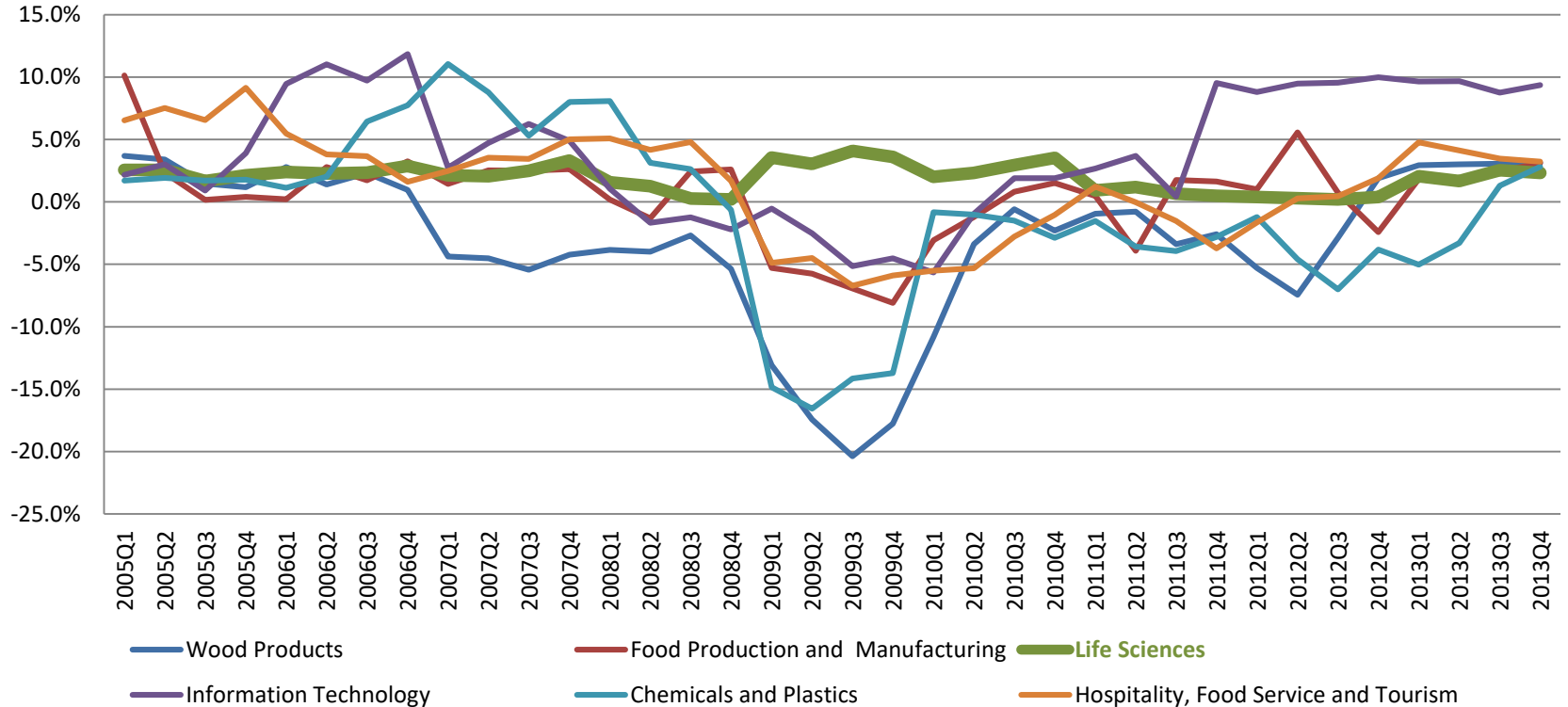
Sectors – Share of Total Employment





Quarterly year-over-year employment change

2005-2013 PacMtn Industry Sectors





workforce
Telecom
healthcare
food
Thurston
tourism
business
unions
Lewis
sciences
forest
wood
unemployment
Pacific
labor
Manufacturing
Automation
hospitals
Mason
production
people
strategic
Gig
region
Chemical
Sectors
plastics

Data Resources



[Regional Employment Snapshot](#)

[6 Regional Sectors](#)

Sector Statistical Report – [Life Sciences](#)

Example of Sector Overview - [Life Sciences](#)

Example of Career Pathway – [Nursing Assistant](#)

[2017 Regional Impact Report](#) and the [Executive Summary](#)



Your thoughts and observations?